

RAILWAY JUNCTION

TO DELHI

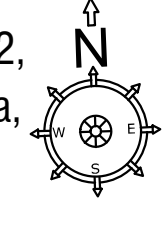
TO MUMBAI

TO BORKHEDA

KESHAWRAY PATAN ROAD

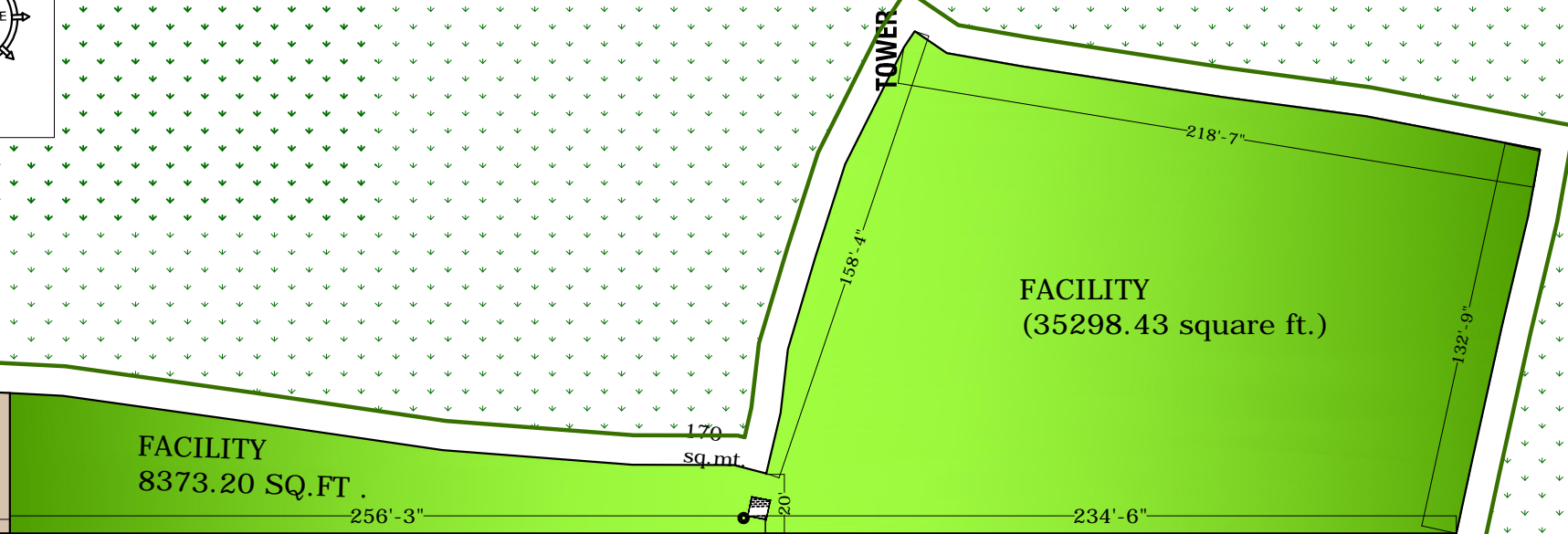
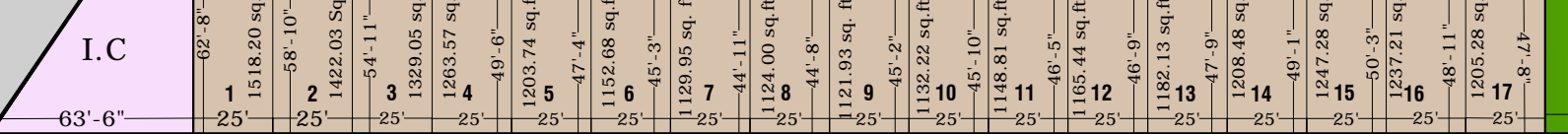
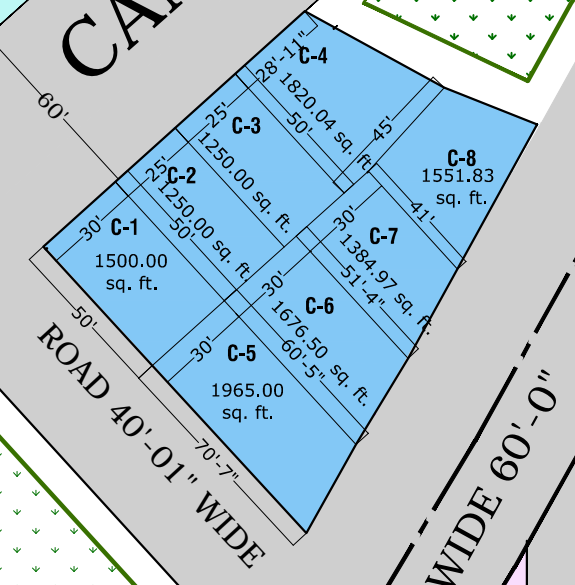
### SOOD VIHAAR

Khasra No. 603/266, 272, 272/1, 272/2, 273, 273/1, 273/2, 602/273, 303, 304, 304/1, Village Borkhra, Tehsil -Ladpura, District - Kota, State - Rajasthan  
RERA NO-RAJ/P/2023/2429



BORKHEDA BYPASS ROAD  
PULYA

TO STATION  
CANAL ROAD WIDE 60'-0"

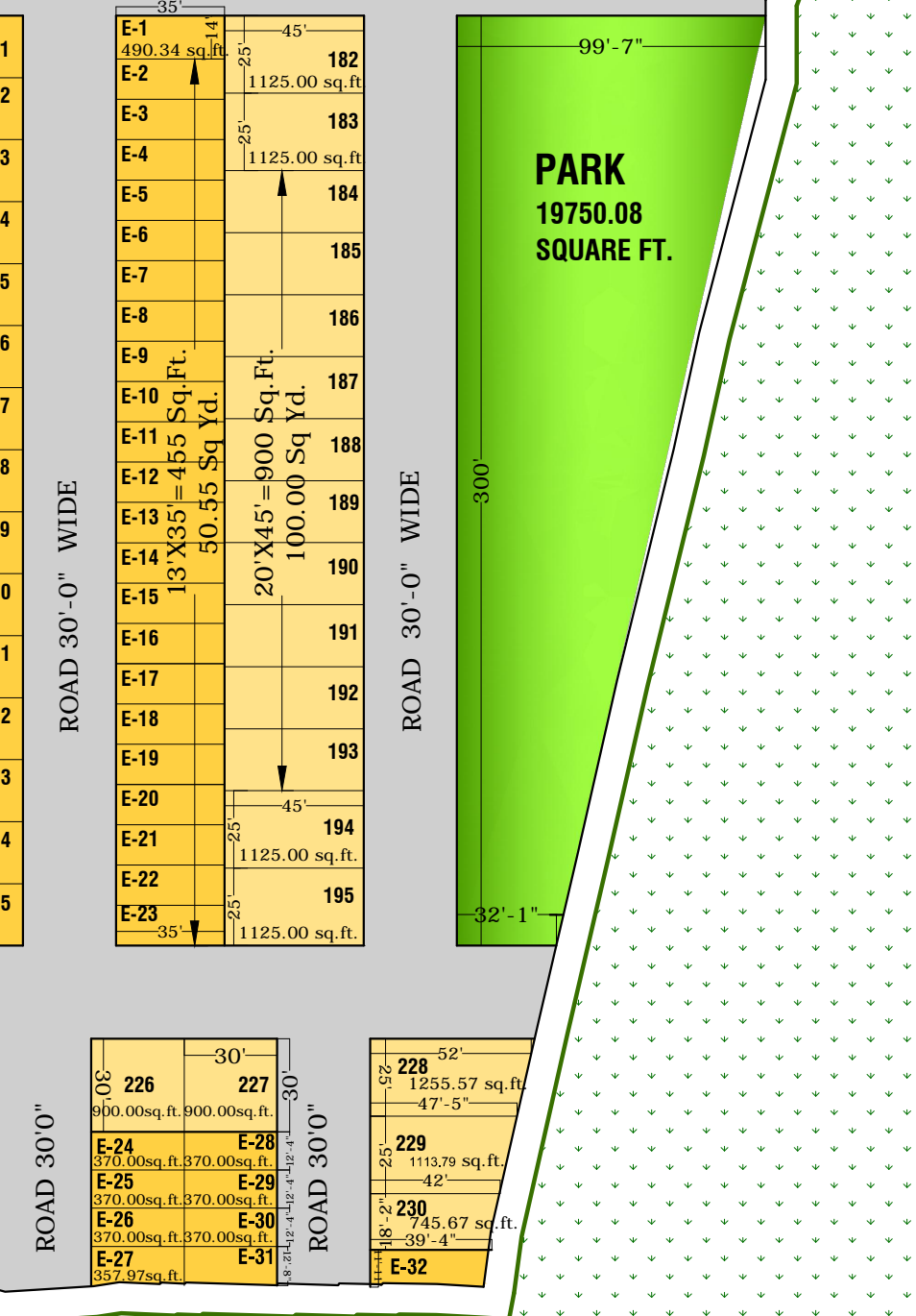
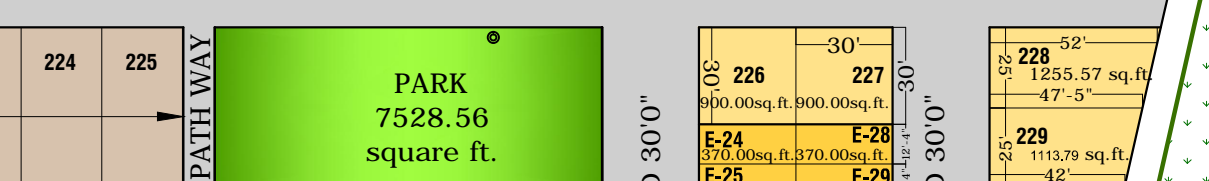
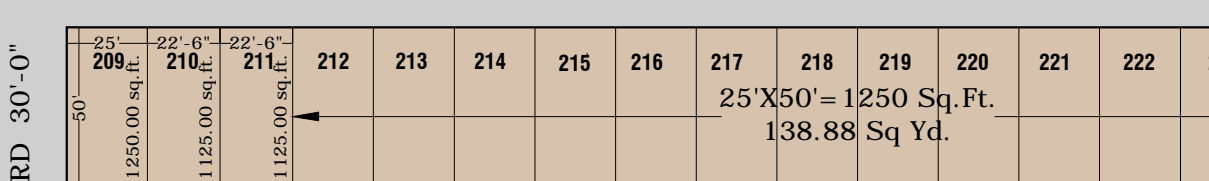
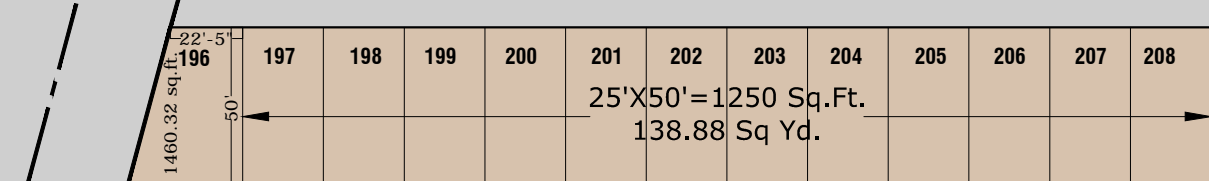
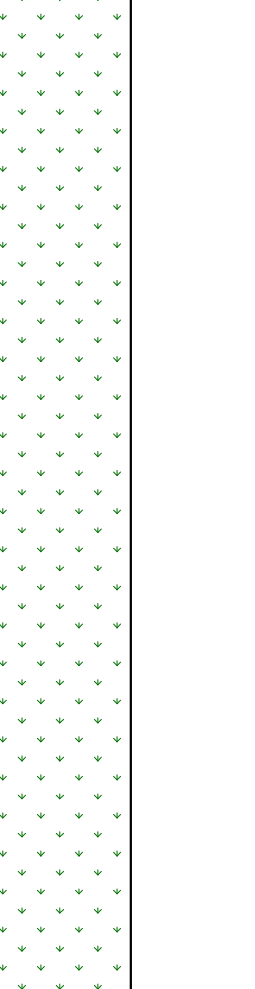
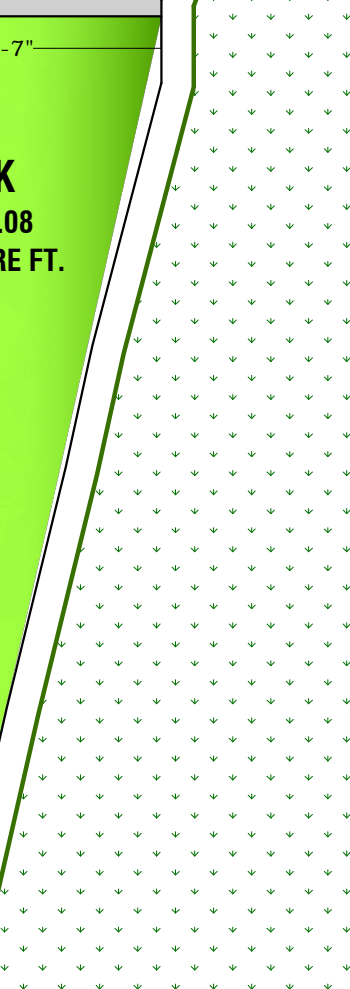
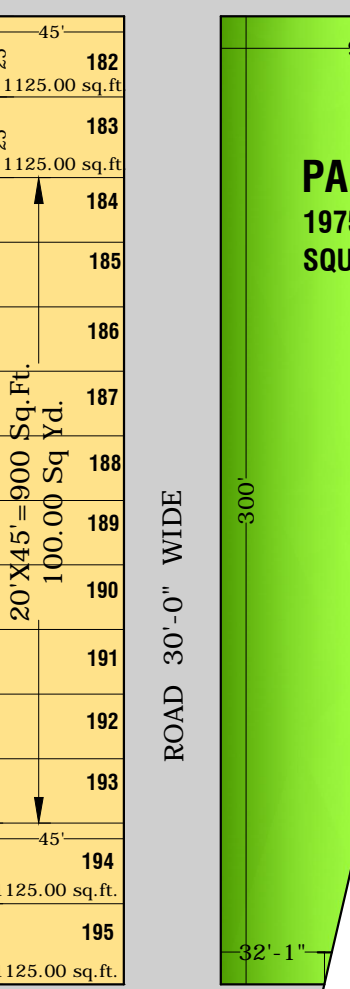
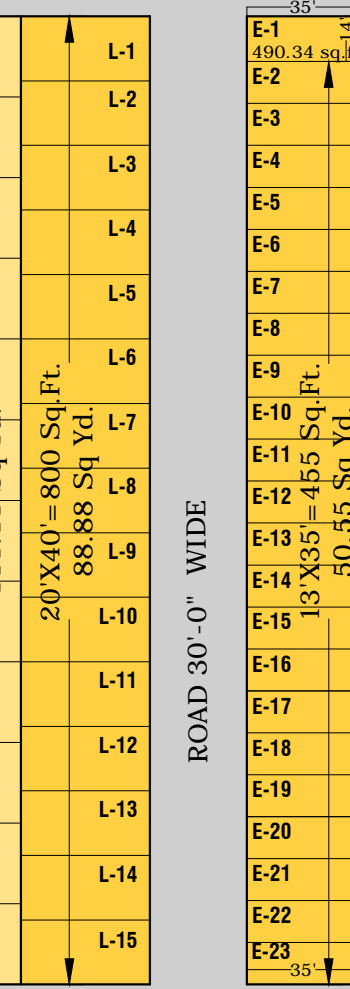
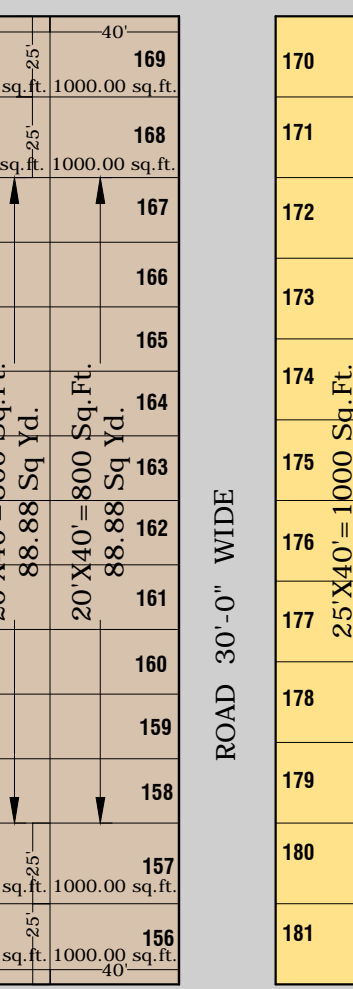
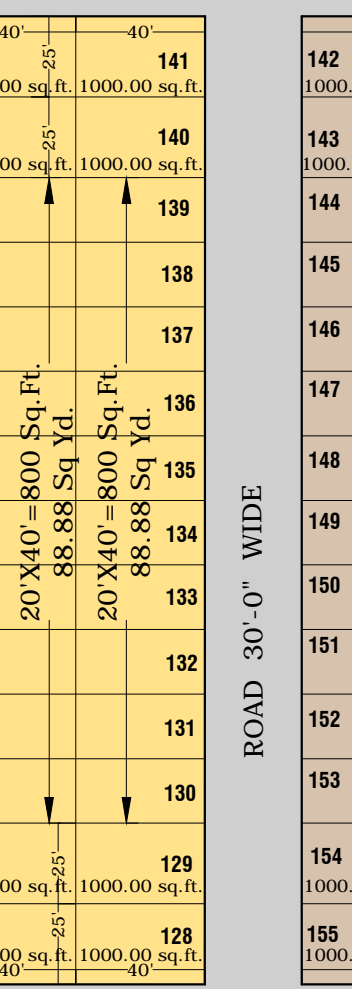
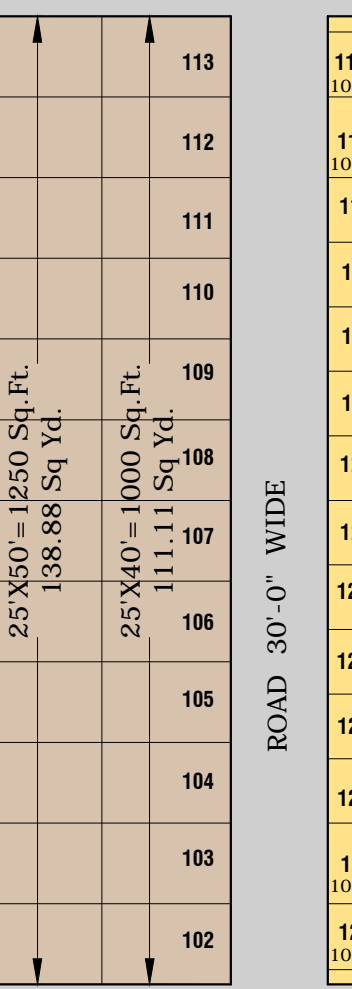
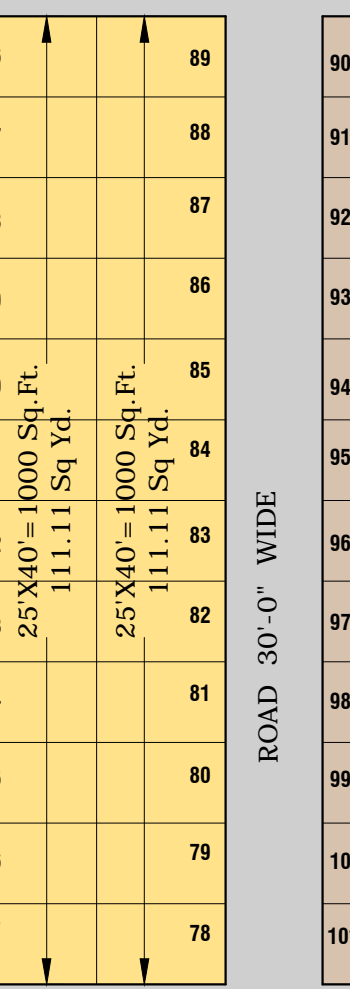
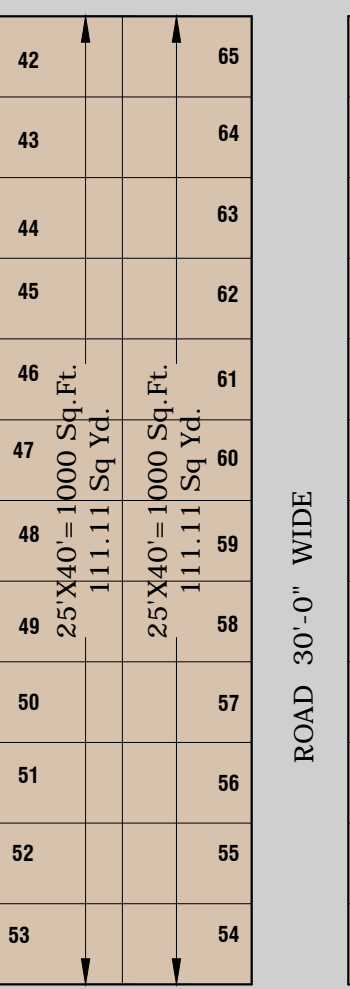
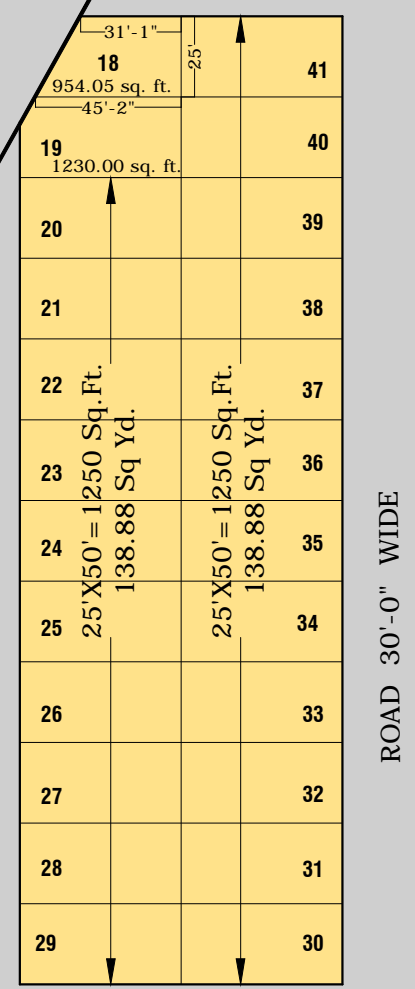
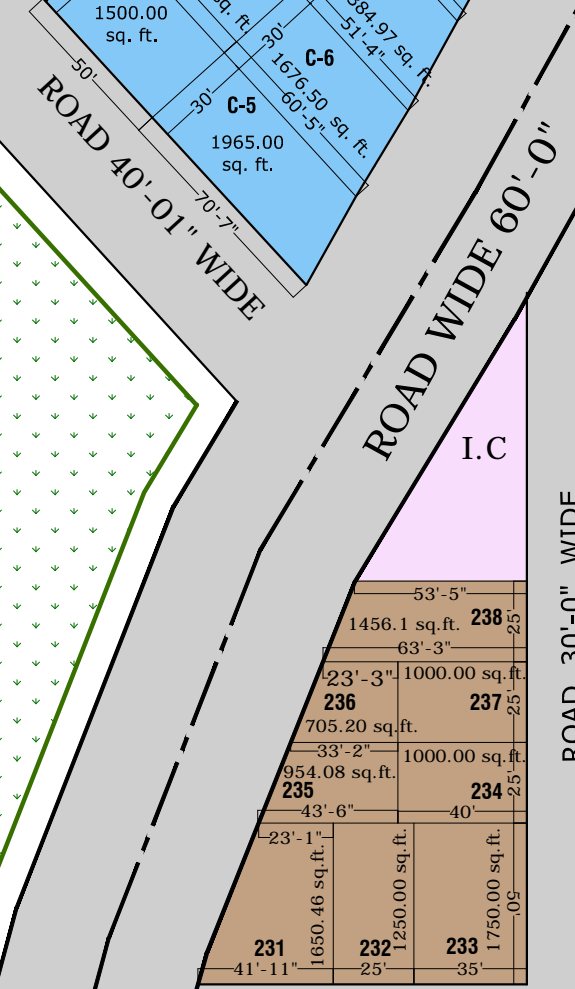


ROAD 40'-0" WIDE

ROAD 40'-0" WIDE

ROAD 30'-0" WIDE

ROAD 30'-0" WIDE



PARK  
19750.08  
SQUARE FT.

PARK  
7528.56  
square ft.